

Flower Mound Elementary



2018-2019 iPad parent meeting

LISD 1:X Program Details

- Students in grades 4 - 12 receive a district iPad for instructional use if family opts in
- Students in grades PK - 5 only have access to the LISD app store. All apps available for download have been vetted by the Digital Learning department. Terms of Service & Privacy Policies have been reviewed to ensure these instructional supports comply with State and National privacy laws.
- Students in 6th - 12th grade still have access to the Apple App Store. This allows them access to all available apps except those 17+. Please review the LISD Unapproved Apps List (these usually contain features such as anonymity). Parents, students, and staff can submit apps to be reviewed if they feel they are harmful. Any app added to the LISD Unapproved App list will be hidden from student devices in grades 6 -12. Students will still have the ability to download or purchase apps listed on the LISD Unapproved list, however they will be unable use them.

[LINK FOR SECONDARY UNAPPROVED FORM](#)

[LINK FOR SECONDARY UNAPPROVED APPS](#)



LISD 1:X Elementary App Store

Apps are categorized into 3 levels

GREEN

YELLOW

RED

Aligns with LISD Curriculum standards and expectations

Appropriate for students <13 without account creation

Being Reviewed by the Digital Learning Department

Reference to Common Core - does not align to Curriculum Standards

Needs parent permission for <13

Costs money

In app access to community features such as texting

[LINK FOR ELEMENTARY APP STORE](#)

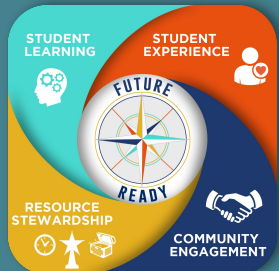


1:X Program Deployment Requirements

- 1:X User Agreement must be signed
- Student Acceptable Use Policy (AUP) must be signed
- Student insurance fee must be paid

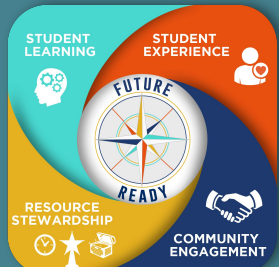
Note:

When forms are completed electronically through Skyward's Family Access Portal, the AUP is automatically agreed upon when submitted.



1:X Replacement Benefit Program

- The Replacement Benefit Program is \$40 annually and covers:
 - 1st break or loss of device with case and keyboard: No Charge
 - \$40 Copay 1st break or loss of (new smart keyboard only)
 - \$50 Copay 2nd break of 1:X iPad
 - \$100 Copay 2nd break or loss of new smart keyboard
 - 3rd break replacement cost
 - iPad 10.5 Pro \$599
 - Repair or replacement cost for legacy device
 - \$110 3rd break or loss of Apple Smart Keyboard
- Points to remember
 - Be sure to be accountable for device and accessories, you will be asked to turn them in at some point. At that time, you will be charged if you do not return exactly what was issued.
 - Costs: Case \$35, Power Adapter \$17.50, Cord \$17.50



How are these
used for LEARNING?

Instructional Resources

The district uses instructional resources that are supported for use on the Student iPad.



In addition to these resources, LISD teachers can use additional digital resources that align with our instructional framework, State Curriculum (TEKS), and best teaching practices. These resources will be communicated to you at the beginning of the year, once the first reporting period has concluded, in addition to anytime new resources are being used with students to enhance and engage the learning environment.



Instructional Resources



Info on LHub - This is where you will find Istation, Skyward, everything Google.



Instructional Resources



Google for Education



Students in the Lewisville Independent School District are supplied with a resource, G-Suite for Education. G-Suite is a set of online tools for communication, collaboration, time-management, and document storage provided by Google to the district at no cost.

Features included in our G-Suite for students:

- Gmail account (go.lisd.net domain)
- Google Drive
 - Docs
 - Sheets
 - Slides
 - Forms
 - Drawings
 - Sites



AUP (Acceptable Use Policy)

The LISD acceptable use policy (AUP) is a document that outlines, in writing, how LISD expects students to behave and utilize district devices. The LISD AUP is a signed agreement between the district, parent, and student.

For more information relating to the LISD Student Acceptable Use Policy, please visit the Technology 1:X Program Resources & Handbook [AUP](https://www.lisd.net/Page/13096) (<https://www.lisd.net/Page/13096>) page.



Content Filter

Tools that are used to manage the student iPads at LISD require the installation of a Mobile Device Management (MDM) Profile. A MDM system is a type of security software used by the LISD Technology Department to monitor, manage and secure iPads across the district. The districts MDM profile is required to provide such tools as pushing managed apps to devices and tracking lost iPads, just to name a few. Only one MDM profile can be used to manage an iPad. Most parent content control software tools requires their own MDM profile to be loaded, which conflicts with the district's MDM.

LISD has filtering and content controls in place to reduce the possibility of students accessing inappropriate content on the device.

For more information regarding MDM and security, please visit the districts Q&A page at [How will the devices be managed](https://www.lisd.net/Page/13130) (<https://www.lisd.net/Page/13130>)



Managing Devices at Home

Battery Life:

Is there a way to maximize battery life on my child's iPad?

Answer

- Visit the Apple Website <https://www.apple.com/batteries/maximizing-performance/> for the most up to date tips for setting your child's device to maximize charge.

Parental Controls:

Is there a way to add parental controls to my child's iPad?

Answer

- Yes, you can add parental controls to your child's iPad. Please visit <https://support.apple.com/en-us/HT201304> . This provides step by step instructions for setting up parental controls.



Managing Devices at Home

Managing devices are a shared responsibility between the District - Campus - Parents - Students.

Some suggestions on how you and your family can work together to meet educational needs and family needs:

- As a family, set up a schedule that works for everyone
- Charge devices in one centralized location. Some examples would: family room, kitchen, or parents bedroom.
- Create a contract with your child on expectations, non-negotiables, and consequences
- Set a time where you and your child look at the iPad together; view the history, apps downloaded, videos, photos, etc.

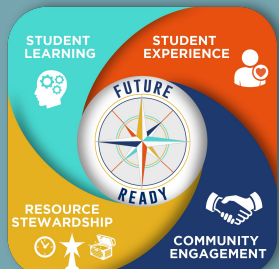




FAQS

When will iPads come home?

- 4th grade students will not be able to bring the iPad home until they have completed the Digital Citizenship coursework. Each campus and student is a little different, so there is no set date. We want to work with our students on being responsible digital citizens at school and home.



Technical Support

HELP!

- Contact our iPad Administrator Tina Joeris, with questions on the 1:X program
- Contact the LISD Technology Help Desk at 972.350.1833 or support@lisd.net
- Go to the LISD parent resources website (<https://www.lisd.net/Page/13089>)



